

Anti-mouse PD1 RlgG2a Antibody(RMP1-14)

Product Information

Product Name	Anti-mouse PD1 RlgG2a Antibody(RMP1-14)
Storage temp.	Store at 2-8°C short term (1-2 weeks).Store at \leq -20°C long term. Avoid repeated freeze-thaw.
Catalog# / Size	GM-87884MAB-1mg / 1 mg GM-87884MAB-5mg / 5 mg GM-87884MAB-25mg / 25 mg GM-87884MAB-50mg / 50 mg GM-87884MAB-100mg / 100 mg

Antibody Information

Expression System	CHO
Aggregation	< 5% as determined by SEC-HPLC
Purity	> 95% as determined by SDS-PAGE
Endotoxin	< 1 EU/mg, determined by LAL gel clotting assay
Sterility	0.2 μ m Filtered
Target	PD1
Clone	RMP1-14
Other Names	PD-1; Pdc1; Ly101
Source/Isotype	Monoclonal Rat IgG2a, κ
Description	The programmed cell death 1 protein (PD-1, PDCD1, CD279) is a member of the CD28 family of immunoreceptors that regulate T cell activation and immune responses. The PD-1 protein contains an extracellular Ig V domain, a transmembrane domain, and a cytoplasmic tail that includes an immunoreceptor tyrosine-based inhibitory motif (ITIM) and an immunoreceptor tyrosine-based switch motif (ITSM). PD-1 is activated by the cell surface ligands PD-L1 and PD-L2. Upon activation, PD-1 ITIM and ITSM phosphorylation leads to the recruitment of the protein tyrosine phosphatases SHP-1 and SHP-2, which suppress TCR signaling. In addition to activated T-cells, PD-1 is expressed in activated B-cells and monocytes, although its function in these cell types has not been fully characterized. The PD-1 pathway plays an important role in immune tolerance; however, research studies show that cancer cells often adopt this pathway to escape immune surveillance. Consequently, blockade of

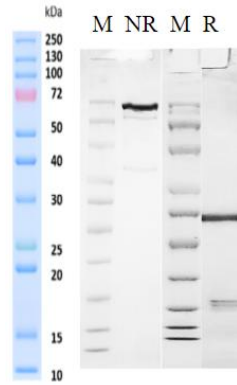
Version:3.1

PD-1 and its ligands is proving to be a sound strategy for neoplastic intervention.

Formulation

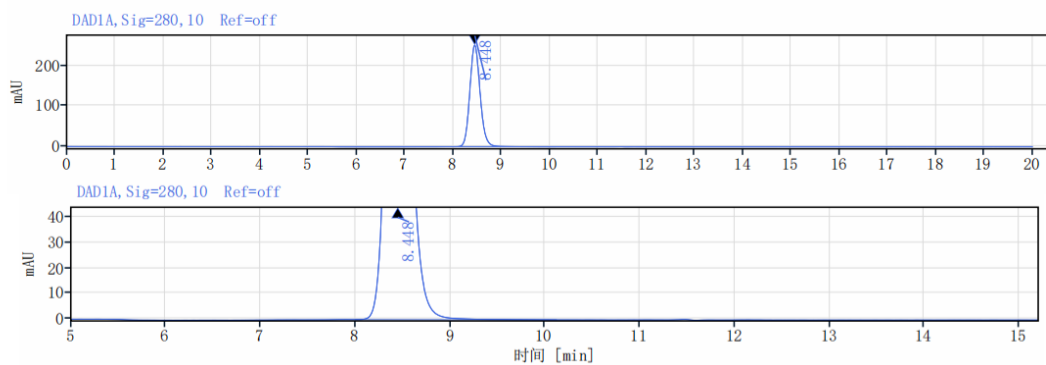
Phosphate-buffered solution, pH 7.2.

SDS-PAGE



On SDS-PAGE under reducing (R)/non-reducing(N-R) condition. The gel was stained overnight with Coomassie Blue. The purity of the protein is greater than 95%.

SEC-HPLC



The purity of this product is more than 95% verified by SEC-HPLC.